

## Ashdon 3km, 10km and Fun Run 2026



**CLICK THE  
LINK BELOW**



[Ashdon 10k, 3k & Fun Run 2026](#)

Ashdon Primary School PTA – 29th Annual 10km, 3km & Fun Run  
Join us on **Monday 4th May (May Bank Holiday)** for our 29th annual run! Whether you're a serious runner, a jogger, or a walker, there's something for everyone as we celebrate the beautiful countryside of Ashdon.

**Race details:** **Registration opens at 09:00 and closes at 09:45, with races starting at 10:30am.** The 10km cross-country route offers a challenging mix of terrains, predominantly off-road across the rolling countryside, with road closures in place for any on-road sections. The course is well marshalled with kilometre markers and a halfway water station.

### Categories:

- 10km adult run (chip timed)
- 3km under-16s run (chip timed)
- 3km fun run

**Please note that children under 11 must be accompanied by a responsible adult over 18.**

**Awards:** Medals for all finishers, with trophies awarded to winners across all sections.

**On the day:** Free car parking, water, first aid, refreshments, food vendors, an ice cream van, and face painting will all be available.

**All races start and finish at Ashdon Primary School.**  
If you have any questions, please don't hesitate to get in touch!

### **A Huge Thank You to Our Wonderful Sponsors!**

Our event simply wouldn't be possible without the incredible generosity of our sponsors. We would like to extend our heartfelt thanks to Ashdon Children's Nursery, Ashdon Parish Council, Cheffins, Saffron Security, The Foot Health Clinic, The Plough Bar & Grill, The Rose & Crown and Ford Homes. Their continued support means that we can keep this much-loved community event enjoyable for everyone — from our youngest fun runners to our most seasoned athletes. We are truly grateful for their kindness and commitment to our school and the wider Ashdon community. If you get the chance, please do support these fantastic local businesses

Address: Bartlow Road; Ashdon; Essex; CB10 2HB Tel: 01799584219 Email: admin@ashdon.essex.sch.uk

## Saturn Class Steps Back in Time with Portals to the Past!

Saturn Class had a truly memorable day recently when *Portals to the Past* came to school to bring Roman Britain to life! The children were fully immersed in an exciting, hands-on workshop – exploring Roman and Celtic life, from soldiers and legionary armour to citizens and slaves. It was a fantastic experience that brought their class topic leaping off the page.

We were absolutely thrilled to hear that our workshop leader was so impressed by the children's behaviour and engagement that he felt he simply had to mention it – what an incredible compliment! Their enthusiasm, curiosity, and exemplary conduct throughout the day were a real credit to themselves, their families, and Ashdon Primary School.



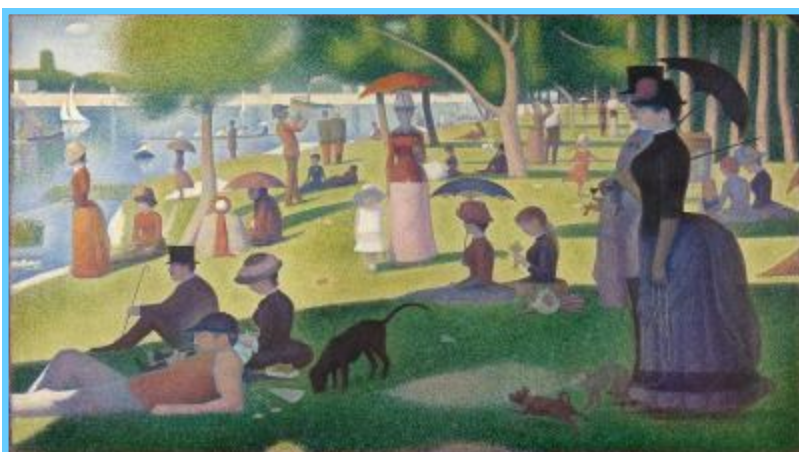
Address: Bartlow Road; Ashdon; Essex; CB10 2HB Tel: 01799584219 Email: admin@ashdon.essex.sch.uk

## Saturn Class Artist

As part of our work on Europe, we have looked at the work of Georges Seurat, a French painter who was famous for the technique 'Pointillism'. We chose an iconic building in Europe (mainly the Eiffel Tower and Big Ben!) and, after some sketching and colour-mixing (the pointillist colour-wheel), we tried our own pointillist paintings.



Oh, and by the way, we were only allowed to use the 3 primary colours: red, blue and yellow!



## Art Club Sculptures

Our Key Stage 2 Art Club is thriving, with lots of talented members who are improving all the time. Recently we have been using air-drying clay and have made figures: heads, some of humans, some of monsters and some of more familiar animals. We have used a range of tools and techniques to help us - who knew that garlic crushers could be so versatile?! Well done Art Club!



## Attendance Winners of the Week!



Regular school attendance is vital for your child's academic success and personal development. Each day offers unique learning opportunities and social interactions that cannot be replicated at home. Consistent attendance helps children build relationships, develop essential skills and maintain learning momentum.

**We understand children become genuinely unwell and will of course report such absences fairly. However, minor ailments like sniffles are not always a reason to miss school, and we encourage attendance wherever possible.**

Missing school creates learning gaps that compound over time. Children who attend regularly achieve better grades, develop confidence and stay engaged with their education.

**Congratulations to Saturn Class for having the highest last week! They will enjoy an extra 10 minutes of playtime as a reward.**

*Jupiter Class: 98.3%*

*Saturn Class: 98.8%*

*Mercury Class: 95.5%*

*Mars Class: 98.7%*

## Stars of the Week

A huge, well-deserved congratulations to this week's Stars of the Week! We are so proud of you for your hard work, your brilliant attitude, and the effort you bring to everything you do. You have truly embodied our school values this week – rising to the Challenge, showing real Care for those around you, and giving us every reason to Celebrate. You truly deserve this



## Important Dates, Events and REMINDERS:

- **Monday 4th May—No school**
  - **Monday 4th May Ashdon Fun Run!**

**Please come and join us all in making this annual event, hosted by our PTA a huge success!**
- **Tuesday 5th May -**
- **Wednesday 6th May @ 15:30-16:00 - Scholastic Book Fair in the Hall**
- **Friday 8th May @ 09:15 - Celebration Assembly**

## Pawsome Reader!



Did you know that Jaffle loves a good story almost as much as he loves a good snooze? Every break time, he settles in with his favourite readers and listens with his whole heart (and both very long ears).

Whether it's an adventure, a mystery, or a tale about a particularly interesting sausage, Jaffle is all ears. He never interrupts, he never laughs at mistakes, and he gives the very best cuddles when a chapter gets exciting. Come and share a story with the luckiest — and most well-read — dachshund in Essex!



Well done!  
Love: Jaffle xxx