

Address: Bartlow Road; Ashdon; Essex; CB10 2HB Tel: 01799584219 Email: admin@ashdon.essex.sch.uk

Jupiter Save Lives - CPR Training

On Monday, Jupiter class learnt an incredibly valuable life-skill and took part in CPR training. They learnt how to safely approach an emergency situation, such as checking for surrounding dangers before approaching a casualty. In addition, they learnt and practised how to effectively deliver CPR and how to put people in the recovery position.

They are now CPR champs!

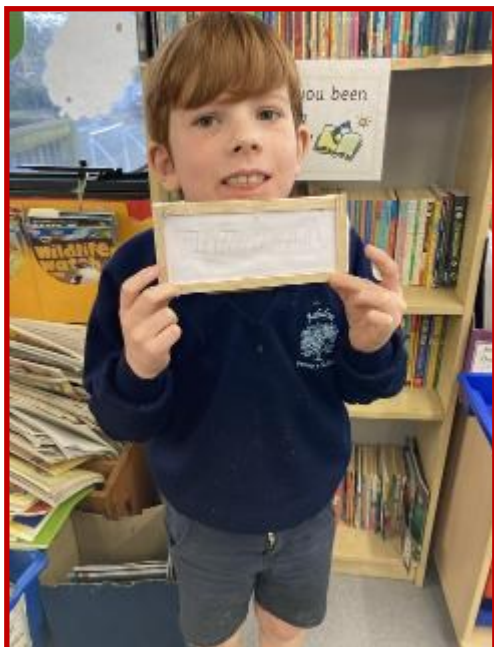


Address: Bartlow Road; Ashdon; Essex; CB10 2HB Tel: 01799584219 Email: admin@ashdon.essex.sch.uk

Saturn 'In the Frame'

Saturn class have been learning lots of new skills in their Design Technology lessons this term:

Angles, accurate measuring, using hacksaws safely, and joining methods, including 'mitre joins'. As a result of all this careful work, we have made our own picture frames, as you can see. We have even measured and made a back for our frames with a gap to slide the picture in!



Address: Bartlow Road; Ashdon; Essex; CB10 2HB Tel: 01799584219 Email: admin@ashdon.essex.sch.uk

Going Back in Time in Mars Class

In history, Mars class have been learning about toys from the past and discussing the sorts of toys their parents, carers and grandparents may have played with! They had a brilliant time making their own version of an old toy to play with and they got to take them home to share!

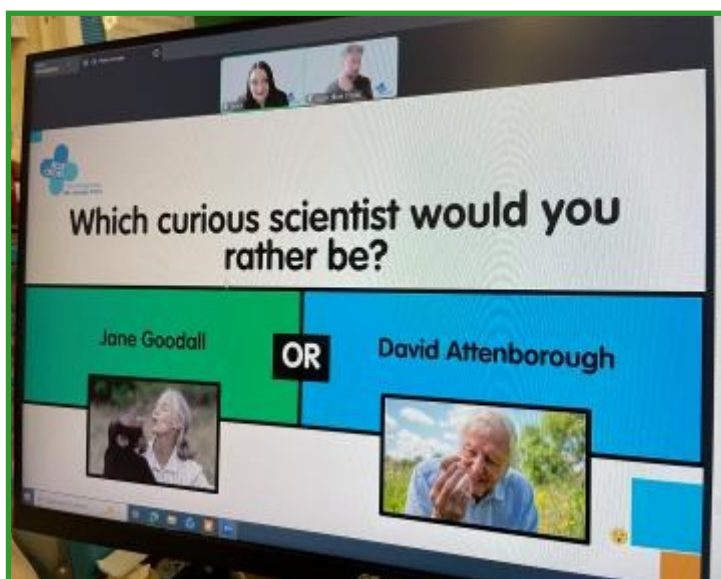


Address: Bartlow Road; Ashdon; Essex; CB10 2HB Tel: 01799584219 Email: admin@ashdon.essex.sch.uk

KS2 Celebrate British Science Week

On Tuesday, Saturn and Jupiter class took part in a British Cross live lesson based on being curious scientists and investigating pet habitats.

We took part in a variety of activities, including guessing the animal that matches the habitat and considering how we can group animals based on similarities between them. We also learnt about different scientists (such as David Attenborough and Charles Darwin) and how they have contributed to our understanding of animal life. It was an interesting afternoon and the children were eager to share their ideas and how it related to their pets at home.



Address: Bartlow Road; Ashdon; Essex; CB10 2HB Tel: 01799584219 Email: admin@ashdon.essex.sch.uk

Ashdon 3km, 10km and Fun Run 2026



**CLICK THE
LINK BELOW**



[Ashdon 10k, 3k & Fun Run 2026](#)

Ashdon Primary School PTA – 29th Annual 10km, 3km & Fun Run
Join us on **Monday 4th May (May Bank Holiday)** for our 29th annual run! Whether you're a serious runner, a jogger, or a walker, there's something for everyone as we celebrate the beautiful countryside of Ashdon.

Race details: Registration opens at 09:00 and closes at 09:45, with races starting at 10:30am. The 10km cross-country route offers a challenging mix of terrains, predominantly off-road across the rolling countryside, with road closures in place for any on-road sections. The course is well marshalled with kilometre markers and a halfway water station.

Categories:

- 10km adult run (chip timed)
- 3km under-16s run (chip timed)
- 3km fun run

Please note that children under 11 must be accompanied by a responsible adult over 18.

Awards: Medals for all finishers, with trophies awarded to winners across all sections.

On the day: Free car parking, water, first aid, refreshments, food vendors, an ice cream van, and face painting will all be available.

All races start and finish at Ashdon Primary School.

If you have any questions, please don't hesitate to get in touch!

A Huge Thank You to Our Wonderful Sponsors!

Our event simply wouldn't be possible without the incredible generosity of our sponsors. We would like to extend our heartfelt thanks to Ashdon Children's Nursery, Ashdon Parish Council, Cheffins, Saffron Security, The Foot Health Clinic, The Plough Bar & Grill, The Rose & Crown and Ford Homes. Their continued support means that we can keep this much-loved community event enjoyable for everyone — from our youngest fun runners to our most seasoned athletes. We are truly grateful for their kindness and commitment to our school and the wider Ashdon community. If you get the chance, please do support these fantastic local businesses

Address: Bartlow Road; Ashdon; Essex; CB10 2HB Tel: 01799584219 Email: admin@ashdon.essex.sch.uk

Bring our Ashdon school Values to LIFE!

Competition Time!

We are launching an exciting whole-school design competition and we need YOUR creativity!

Our school motto is Challenge, Care and Celebrate - and we want YOU to design a piece of artwork that represents what these words mean to you.

Here's what to do:

You will be given a special template that already includes our school tree logo and one of the three words - Challenge, Care, or Celebrate. Your job is to fill it with the most colourful, creative, eye-catching artwork you can imagine! Think patterns, illustrations, scenes - anything that shows what that word means to you.

The rules are simple:

- Use as much colour as possible - the brighter the better!
- Keep the school logo and the word (Challenge, Care, Celebrate) visible in your design
- Be as creative as you like!
- One per child!
- Deadline - 13th April

The best designs will be professionally printed and displayed around school for everyone to enjoy. So get those pencils, felt tips and imaginations ready!

Good luck to everyone - we cannot wait to see what you create!



Challenge

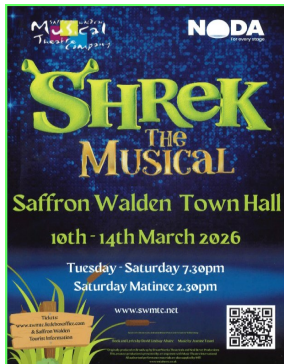
Example Template

Children will be given templates by their class teacher

Sophia Shines in Shrek the Musical!

We are incredibly proud of Sophia, who has been amazing on stage in *Shrek the Musical* in Saffron Walden. This week, Mrs Reynecke-Raybould, Mrs Jarmain, and Mrs Johnson watched her perform brilliantly as Young Shrek, a deer, and Lord Farquaad's father ('the dwarf').

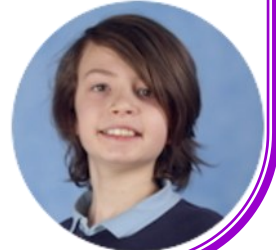
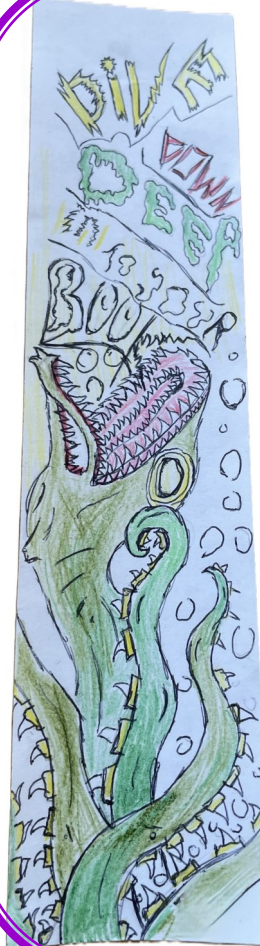
She has shown fantastic talent, energy, and dedication. The show runs until **Sunday 14th March** - if tickets are still available, it's truly worth seeing. An absolute showstopper!



World Book Day Bookmark Competition — We Have a Winner!

We are incredibly proud of Thane in Year 5, who has been selected as a winner in the Reed Education World Book Day 'Design Your Own Bookmark' competition — beating thousands of entries from across Cambridgeshire. His brilliantly creative design, featuring a dramatic sea creature complete with sharp teeth, swirling scales, and bold comic-book lettering, clearly captured the imagination of the judges.

Thane will be appearing live on **BBC Radio Cambridgeshire** on **Monday 16th March at 07:30**, where he will be interviewed by presenter **Sue Dougan**. Link: [Radio Cambridgeshire - Listen Live - BBC Sounds](#) We'd love for as many of you as possible to tune in and cheer him on — what a fantastic achievement and a very well-deserved moment in the spotlight! Congratulations, Thane — we are so very proud of you!



Jaffle's Winning Photo Has Arrived!

This morning in our celebration assembly, we unveiled the large print of Jaffle's professional photoshoot to all the children — and what a moment it was!

Thank you to everyone who voted for Jaffle as Dog of the Year and then for their favourite photograph.

The print will be put up in the school very soon. We can also happily tick 'learning about democracy' off our British Values list for the year!



STARS OF THE WEEK



Well done to all our wonderful Stars of the Week! You are absolutely amazing and we are all so incredibly proud of you.

Well Done!!

Attendance Winners of the Week!



Regular school attendance is vital for your child's academic success and personal development. Each day offers unique learning opportunities and social interactions that cannot be replicated at home. Consistent attendance helps children build relationships, develop essential skills and maintain learning momentum.

We understand children become genuinely unwell and will of course report such absences fairly. However, minor ailments like sniffles are not always a reason to miss school, and we encourage attendance wherever possible.

Missing school creates learning gaps that compound over time. Children who attend regularly achieve better grades, develop confidence and stay engaged with their education.

Congratulations to Mars Class for having the highest attendance the week before half term! They will enjoy an extra 10 minutes of playtime as a reward.

Jupiter Class: 97%

Saturn Class: 95.3%

Mercury Class: 95.5%

Mars Class: 97.9%

Important Dates, Events and REMINDERS:

- **Monday 16th March at 13:30 - Special Assembly to congratulate Reed Education bookmark winner. Parents welcome to attend.**
- **Wednesday 18th March - KS2 and Y2 Gym and Dance Competition @ Saffron Walden County High (Saffron Hall) 16:15-18:00**
- **Thursday 19th March @ 09:00-10:00 - Parent and Toddler Playgroup**
- **Thursday 19th March - Mars Class Safari**
- **Friday 20th March @ 09:00-11:00 - Mars Class Dance Competition at Radwinter (no Celebration Assembly)**
- **Tuesday 24th March @ 09:15 in school Revd Romey to lead Easter Service (all parents and family welcome to attend)**
- **Tuesday 24th March @ 10:30 Reception and Y6 Weighing and Measuring**
- **Wednesday 25th March @ 15:30 - PTA Easter Egg Hunt (time change)**
- **Thursday 26th March - Ashdon Red Nose Day (all children to dress in RED and please bring a £1 donation if you can)**
- **Friday 27th March @ 14:00 - Music Spring Festival (no Celebration Assembly due to this)**
- **Friday 27th March - Last day of Spring Term 2**
- **Monday 13th April - First Day of Summer Term 1**

Packed Lunches & Snacks

As we continue to promote healthy eating habits, we'd like to remind all parents and carers of our guidelines when preparing packed lunches and snacks for your children.

Please be aware that we are a completely nut-free school. This means that all foods containing nuts – including nut-based spreads such as peanut butter – are strictly not permitted on school premises. We have pupils and members of staff with serious nut allergies, and we appreciate your support in keeping our whole school community safe.

When packing your child's lunch, please also note the following:

- No energy drinks – these are not suitable for children and are not permitted under any circumstances.
 - No sweets or chocolate bars, please.
- A small treat is absolutely fine – a biscuit, a small cereal bar, or a piece of cake is perfectly acceptable!

We encourage lunches that include a good balance of foods – a sandwich or main, some fruit or vegetables, a dairy item such as yoghurt or cheese, and a drink of water or diluted juice.

Morning Snacks

We have noticed recently that a large number of children are bringing crisps as their morning snack. We'd like to gently remind parents that crisps, sweets, and chocolate are not considered healthy snack choices, particularly at the start of the school day.

More suitable morning snacks include:

- Fresh fruit or vegetables
- Yoghurt
- Healthy breakfast bars (please remember – no nuts!)

A nutritious morning snack helps children to concentrate and get the most out of their learning, so your support with this really does make a difference!

Thank you so much for your continued cooperation. If you have any questions about our packed lunch or snack guidelines, please don't hesitate to speak to a member of staff.

Many thanks,



Dear Parents,

We'd love for you to follow and regularly check our school Facebook Page!

We are now updating it regularly with all the wonderful things happening here at school – from exciting activities and learning highlights to special events and celebrations. It's a brilliant way to stay connected, see what your children are getting up to, and help us spread the word about our fantastic school community.

The more engagement we get, the more visible we become to the wider public, so please do give us a follow, hit that like button, and share our posts with family and friends!

Thank you so much for your continued support – we really do appreciate it. Click on the logo.

Kind Regards,

Mrs Reynecke-Raybould

